






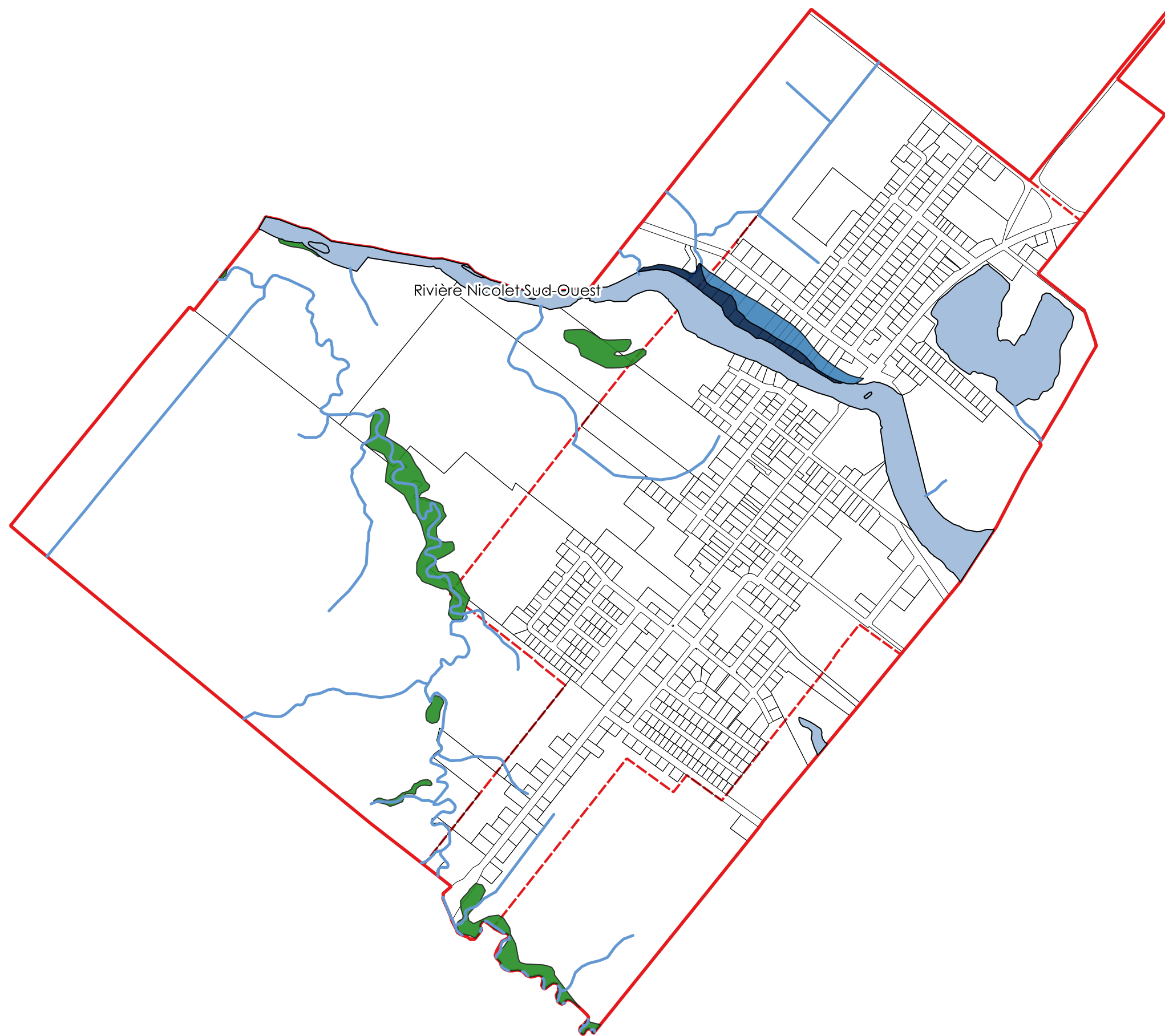


**Plan d'urbanisme
Règlement no. 2021-425**

**Annexe A
Hydrographie**

Légende :

-  Hydrographie
-  Zone inondable 0-20 ans
-  Zone inondable 20-100 ans
-  Milieux humides potentiels
-  Cadastre
-  Limite municipale
-  Périmètre urbain



Authentifié ce jour

Sylvain Jutras, Maire

Isabelle Dumont, Directrice générale

Sceau :

Échelle : 1:12 000

0 100 200 300 m

Sources des données géomatiques:

© MRC de Drummond
© Gouvernement du Québec.



Réalisée par : Mathieu Brunelle Descheneaux
Urbaniste

GESTIM

Date : 28-04-2020